



# The Council Quarterly

Quarterly Newsletter of the Florida Urban Forestry Council

2023 Issue One

The Council Quarterly newsletter is published quarterly by the Florida Urban Forestry Council and is intended as an educational benefit to our members. Information may be reprinted if credit is given to the author(s) and this newsletter. All pictures, articles, advertisements, and other data are in no way to be construed as an endorsement of the author, products, services, or techniques. Likewise, the statements and opinions expressed herein are those of the individual authors and do not represent the view of the Florida Urban Forestry Council or its Executive Committee. This newsletter is made possible by the generous support of the Florida Department of Agriculture and Consumer Services, Florida Forest Service, Wilton Simpson Commissioner.

## FORT LAUDERDALE'S BEAUTIFUL AND CONTENTIOUS RAINTREE (AN UPDATE)

Submitted by Mark Williams, City Urban Forester

Back in 2013 an old friend and colleague of mine Bob Brennan (South Florida arboricultural legend) was heavily involved in a highly contentious project which aimed to relocate a State Champion Raintree (*Albizia saman*) protected by Fort Lauderdale City Commission Resolution (N0. 87-318). The location of the tree was preventing development of a riverfront property located at 408 SW 4th St Fort Lauderdale, Florida. Marina Lofts as it was known back then aimed to revitalize a previously empty land parcel adjacent to the New River within downtown Fort Lauderdale. This was seen as an ambitious development project, with one major

drawback a large, protected Raintree onsite would be impacted. After much public discussion and dissent the previous City Commission passed a resolution (No. 13-142) which allowed the Raintree to be relocated offsite to a proposed new public park, and which also required posting of a \$1,000,000 bond requiring the property owner to maintain the tree long term. While this allowed the project to proceed significant questions and concerns remained regarding the continued health and survival of the Raintree once it was relocated. The tree would have to be transported underneath overhead utility lines and would require substantial crown

reduction to be moved to the new site. **(For additional reference Bob wrote an earlier article about the Raintree project for The Council Quarterly back in 2013; see <https://fufc.org/downloads/councilquarterly13v2.pdf>, page 14).**

Then the market took a downturn, public opposition increased, and the project was shelved. Bob Brennan unfortunately passed away unexpectedly in December of 2016. All things were quiet onsite until late 2018 through early 2019 when the property owner (Asi Cymbal, Cymbal Development) decided to rebrand and redesign his project under the new name Raintree Riverwalk Residences. Environmental Design Inc.

*continues on page 3*



### INSIDE:

Fort Lauderdale's Beautiful and Contentious Raintree (an Update).....	1 & 3
President's Message.....	2
2023 UFI Review.....	5
Stump the Forester.....	6-7
Tree of the Quarter.....	8
2022 Friends of Our Urban Forest Awards Program.....	10-11
Project Learning Tree.....	13
Celebration of Life.....	13
Members.....	14
Past Presidents.....	15
Request for Articles.....	15

# PRESIDENT'S MESSAGE



Greetings all,

I am so excited to serve as President of the FUFUC in 2023, This new year brings exciting opportunities with fresh faces joining the Executive Committee and a new Executive Director at the helm.

It is my personal goal to expand our community and the connections within our community. The FUFUC is the conduit for collaboration and sharing information about urban forestry throughout Florida.

We have already met this goal with educational content and networking opportunities provided by the 2023 UFI conference. The theme this year was "Trees for Resilient Communities."

I think it might have been one of my favorite UFI's so far.

The UFI Committee brought together a terrific lineup of urban forest researchers and industry leaders

presenting on how to manage and maintain Urban forests ecosystems and human infrastructure so they can withstand and recover from disturbances such as natural disasters, climate change, and stressors associated with the need for safe and reliable services from the built environment.

The content was incredibly valuable, so much so that we were able to offer more than 60 CEU's total for 7 different associations, the most I can recall from any prior UFI. It speaks to the value of the content and the diversity of industries interacting with urban forests. I wish to extend my thanks to our UFI co-chairs Darryl Richard and Justin Freedman and the whole UFI committee for their expertise and hard work organizing this year's conference.

In addition to the annual UFI, *The Council Quarterly* has long been a reliable platform and resource for educational content as well a community spotlight. This volume, like so many before, provides a forum for information, best practices, and unique experiences.

Mark Williams reporting on moving a massive Rain Tree in Ft Lauderdale is a story about coordination between public and private interests to relocate a tree, that although non-native, had significant cultural value to the community.

The 2022 FUFUC Annual Awards highlight the diverse professions and individuals who are making a significant impact on the improvement and enhancement of urban forest in their communities. Don't just read about their good works, reach out to those awardees, and talk to them about how you can translate their success to your position or community.

News of PLT's new partnership with Minorities in Agriculture, Natural Resources, and Related Sciences (MANRRS) highlights how mentors and professionals are making connections with young Black Americans interested in urban forestry and other green industry here in Florida and across the country.

All, these stories are examples of current practices and the potential for our community to collaborate, share knowledge, and help advance the work and service of fellow urban forestry practitioners. Let's all be that peer or colleague ready to share, give advice or support, or simply lend a gentle ear to make our community more resilient and sustainable for years to come. Thank you.

Regards,

*Carolyn Cheatham Rhodes*  
FUFUC President

## NEWSLETTER ADVERTISING ANNUAL RATES:

Business-card size advertisement.....	\$75/yr.
Quarter page advertisement .....	\$115/yr.
Half-page advertisement.....	\$225/yr.
Full page advertisement.....	\$450/yr.

...

*Make a  
Lasting  
Impression!*

To place an advertisement in *The Council Quarterly*, please contact [info@fufc.org](mailto:info@fufc.org) or order online at <https://fufc.org/advertising/>.

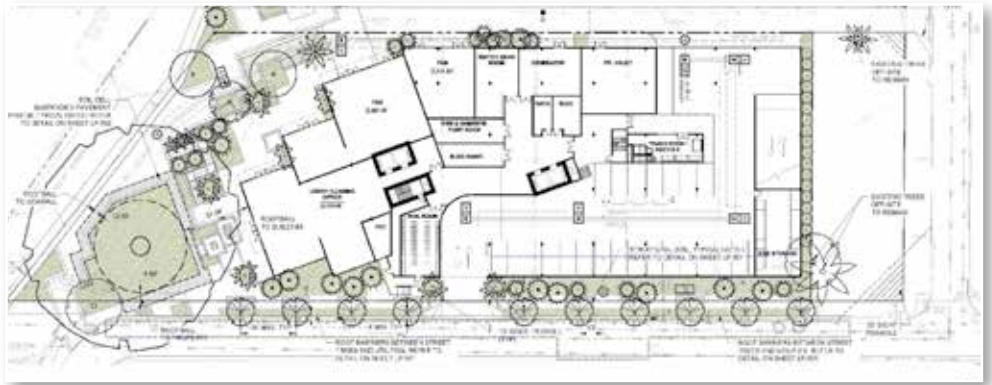
continued from page 1

out of Houston, Texas was hired by the developer to prepare and oversee the relocation of the Raintree with initial root pruning activities starting in August of 2021.



*(Initial root pruning conducted by Environmental Design August 2021)*

Subsequently, and in large part due to significant public outcry additional in-depth reviews took place between me, the developer, Environmental Design Inc., City DSD staff, and the community at large to refine and improve the previously agreed upon resolution terms. As a direct result a new City resolution was passed in January 2022 (No. 22-11) which preserved the \$1,000,000 bond, long term maintenance responsibility of the tree by the property owner and identified and confirmed a better onsite alternative location for the tree closer to the new proposed seawall. The new site would become a part of an extension to the City's Riverwalk pedestrian plaza on the southside of the New River, with the Raintree as its focal point. In addition, a lightning protection system, detailed tree management plan, and incorporation of a Silva Cell soil system were all required by me and adopted by the Developer as part of the project and intent to maintain long term health and survival for the Raintree.



*(Raintree Riverwalk Residences proposed design 2021)*

Work steadily progressed onsite with final preparations for relocation of the tree starting in July of 2022 and continuing through early August. Bartlett Tree Experts performed necessary structural pruning and Environmental Design Inc. staff started moving the Raintree on August 4, 2022. For scale purposes the Raintree's estimated dimensions were as follows: 2,224 square foot root system with 5.5' depth, 52' diameter rootball, 1,868,058 lbs. weight at transplanting, 78.34" dbh, 140' canopy spread and 115' overall height. This presented a fantastic opportunity for me and numerous others to witness a historic specimen tree literally being rolled across the project site. Career highlight for sure.



*(August 4, 2022, Relocation by Environmental Design Inc.)*

**Today:** Due to unexpected logistical delays the Raintree was temporarily anchored in place about 200' short of its final location, while the new supporting seawall is permitted, finalized, and installed. The tree has been anchored utilizing buried jersey barriers, and numerous cables/chains stabilizing the root system, trunk, and scaffold limbs along with a supplemental irrigation system to prevent rootball desiccation. The tree remains in good condition and is actively monitored by me and Environmental Design Inc. staff while awaiting the final move. Be on the lookout for a future update closing this chapter of the tree's story while starting a new one, as the Raintree Riverwalk Residences project moves forward.



*Post Hurricane Ian (October 2022)*





The Florida Urban Forestry Council (FUFC) celebrated its long-standing tradition of presenting the annual Urban Forestry Institute (UFI) conference. The UFI provides affordable education for a wide range of urban forestry people, professions, and topics. This year, 2023 marks the third year in a row that the UFI was delivered virtually via the Whova online conference platform. Speakers from across the United States and leaders from Florida's urban forestry joined in the conversation about "Trees for Resilient Communities."

The UFI Program Committee and the FUFC Executive Board would like to thank all the speakers that made the UFI possible by sharing their insightful presentations. We extend a BIG thank you to the participants that were willing to come together in this virtual format to soak up the latest urban forestry developments and interact with a community of scientist, planners, and practitioners. A huge shout out goes to the UFI sponsors and exhibitors for their financial support of the urban forestry community with various products, services, and solutions.

### As a quick recap of the presentations:

- **FUFC President's Welcome:** Carolyn Cheatham Rhodes, Urban Forester, Pinellas County, FL.
- **Welcome by FUFC Allied Organizations** Included Ali Summersill – Florida Chapter of the International Society of Arboriculture (FL ISA); Todd Little – Florida Forest Service (FFS); Tal Coley – Florida Nursery Growers and Landscape Association (FNGLA); Laurie Hall – Florida Chapter of Florida Chapter of American Society of Landscape Architects (FL ASLA); Richard Durr – Florida Recreation & Parks Association (FRPA); Chris Knslow – Florida Chapter Society of American Foresters (FSAF); Dean Stoddard – Florida Dept. Of Transportation (FDOT); and Andra Johnson – UF/IFAS Extension Service.
- **Urban Forest Management:** A primer to Strategic Planning, by Robert Northrop, UF/IFAS Extension Forester.
- **Two Hurricanes and an Urban Forest:** Heather Shields, City Arborist, City of Naples
- **Historic Segregation and Present Day Tree Canopy Cover and Street Tree Biodiversity,** by Dexter H. Locke, Research Geographer, USDA Forest Service
- **Urban Forest Management (Protecting Vital Infrastructure for Community Resiliency and Sustainability,** by Brian Voelker, Senior Env. Scientist, Chen Moore and Associates.
- **Trees for Resilient Utilities,** Erin Givens – OUC Utility Forester, and Joe Anderson – JEA Utility Forester
- **Smart Growth Principles and the Urban Forest,** by Nadia Locke, RES
- **Training Volunteers to Structurally Prune Trees,** by Hunter Goan, Master's Student, University of Florida
- **Increasing and Maintaining Urban Tree Canopy Cover Throughout and Across Municipalities,** by John Harris, President, Earth Advisors, Inc.
- **Tree Equity,** by Ian Leahy, Vice President of Urban Forestry, American Forests
- **Expanding Urban Tree Diversity: Perspectives from around the USA,** by Dr. Deborah Hilbert, FUFC Executive Director
- **Greening Development: Curbing urban tree canopy loss and increasing green infrastructure adoption through incentives,** by Elise Willis, Master's Student, University of Florida
- **10,000 Trees in 5 years: A municipal and non-profit partnership to increase the canopy in Delray Beach,** Matt Shipley, Co-Founder, Community Greening
- **Nature-based heat resilience: A framework for data-driven policy design,** by Evan Mallen, Senior Analyst, Georgia Tech's Urban Climate Lab.
- **How Green is Green Enough? A Comparison of Urban Forest Access, Needs, and Support in Florida,** Dr. Andrew Koeser, Associate Professor, University of Florida
- **S.O.A.P. for Community Associations,** by John Snow, Tree Tech
- **Planting Priorities: Equitable Canopy and Technology,** by Ian Hanou, PlanIt Geo
- **UFI Wrap Up** by UFI Committee Chairs Darryl Richard and Justin Freedman

As we adapt to changes occurring in our environment and society, we need to keep our field relevant to the professions, occupations, and needs of the communities we serve. It is only through careful observation, meaningful conversations, and collaboration that we can understand and sustain trees for resilient communities. Our diverse perspectives enable us to create insight and unity in our efforts to properly manage Florida's urban forest – and the resources and services they provide. We encourage you to connect with the Florida Urban Forestry Council to build a more diverse and inclusive organization that will better serve constituents, customers, colleagues, and future generations to build a tree-mendous future for Florida's urban forests.

### A shout out to the 2023 Sponsors:

- Florida Forests Service
- Earth Advisors, Inc.
- Orlando Utilities Commission
- PlanIT Geo
- NRPS Legacy Arborist Service
- Dark Moss
- Quiet Collier, Inc
- Friends of Florida Urban Forestry Council

### Special thank you to UFI committee members:

- **Dr. Deborah Hilbert** – FUFC Executive Director
- **Carolyn Cheatham Rhodes** – FUFC President
- **Darryl Richard** – UFI Co-Committee Chair
- **Justin Freedman** – UFI Co-Committee Chair
- **Bill Lester** – UF/IFAS Extension Agent
- **David Fox** – UF School of Forest, Fisheries, and Geomatics Sciences
- **John Harris** – Earth Advisors
- **Erin Givens** – FUFC Marketing Chairperson
- **Alex Hancock** – Urban Forest Climate Consultant, PlanIt Geo
- **Brian Voelker** – Senior Environmental Scientist, Chen Moore and Associates

# STUMP THE FORESTER



beautiful; it is the external fruiting body of interior decay; tale-telling; and it is not a good sign in an urban tree.

*Ganoderma* is a genus of polypore fungi in the family *Ganodermataceae* – a large and diverse genus of wood decay fungi. Several *Ganoderma* species are found throughout the southeastern United States. Polypore funguses are commonly referred to as bracket fungi, shelf fungi, and conks. The photo is true to form. *Ganoderma* species are generally associated with decay of roots or the lower trunk and root flare. They are a white rot that breaks down the structural components of wood - cellulose and lignin in trees. They have an important decomposing function in forest ecosystems.

*Ganodermataceae* fungi can be quite showy in color. The name *Ganoderma* is derived from the Greek word for brightness (*gano*) and skin (*derma*). Color is often an important factor in fungi identification. For the tree care practitioner, the bright colors are screaming, “notice me, notice me!” The fungus is a tattletale

sign revealing secrets that can eventually lead to undesirable consequences. It is recommended that a tree risk assessment be completed, and that property insurance policies be up to date for vehicles and structures within proximity if the liabilities associated with the tree hazard is not removed.

The exterior conk is a definite indicator of interior decay. Fungi often allude to tree disease and structural weakness. *Ganoderma* does not always indicate imminent failure or mortality. Some trees are more susceptible to decay. Different tree species have different relative tolerances to decay. The live oak (*Quercus virginiana*) has greater resistance to the decay and less vulnerability than the laurel oak (*Quercus hemisphaerica*). Generally, where *Ganoderma* conchs are present, a tree risk assessment is highly recommended to evaluate the level, degree, or extent of decay – and the risk and hazard of the host tree.

*Continues on page 7.*



**QUESTION:** What is the brightly colorful fungus?

**ANSWER:** Laccate *Ganoderma* fungi

The brightly colored fungus in the photograph is many things. It is a *Ganoderma* wood decay fungus; it is



Detailed identification of various *Ganoderma spp.* can stump the forester. *G. sessile* and *G. curtissii* look very similar and easily mixed up. There is no shortage of information, literature, and guides geared for academic knowledge for a Mycologist, and perhaps the enthusiast foraging for food and medicinal properties of fungi. On the other hand, practical information relating to tree pathology and tree risk assessment can be scarce.

For the urban forester, arborist, or tree care professional, it is most important to recognize the fungus as a sign of a plant disorder and a hazardous tree condition that can impair a tree's vital functions - leading to tree failure or mortality. *Ganoderma*, like other pathogens, are opportunistic. Unhealthy, weak, or

severely stressed trees, or tree parts, make for susceptible host. In the urban landscape especially, the fruiting bodies are a good sign that bad things are happening. Not only is the tree's health questionable, but the structural integrity may be compromised. *Ganoderma* species are generally associated with decay of roots, lower trunk, and root flare. This is not a good place for decay. The anchoring system, and/or base of the tree column, is a critical load bearing focal point.

Things are bad until they get worse. In this picture, between the conks, is the gray-silvery fungal mat of hypoxylon canker (genus *Hypoxylon*). Hypoxylon canker is a tree disease caused

by a separate fungus that will ultimately contribute to tree mortality. Hypoxylon canker infects vascular tissues in the inner bark and sapwood. Hypoxylon canker is a secondary disease. Harmful infections rapidly spread in trees previously weakened, unhealthy, damaged, or stressed. Advance stages produce obvious symptoms seen as thick, dusty, gray/silver fungal mats giving the appearance of thick paint on the surface of the trunk or affected branch. Normal healthy trees are not susceptible to severe infection.

For specific, comprehensive, on-site assessment of a tree's health and hazard, seek out the expertise and solutions offered by arborists, foresters, and tree-care professionals available through a network of state organizations, county and municipal agencies, private consulting firms, and local tree-care practitioners.

*Answer Provided by Joe Anderson, JEA Utility Forester, ISA Certified Arborist, FUFCA Board Member*

---

*“For the urban forester, arborist, or tree care professional, it is most important to recognize the fungus as a sign of a plant disorder and a hazardous tree condition that can impair a tree's vital functions - leading to tree failure or mortality.”*

---

conks, is the gray-silvery fungal mat of hypoxylon canker (genus *Hypoxylon*). Hypoxylon canker is a tree disease caused



*If you would like to ‘stump the forester,’ see page 15 for information on submitting your question!*

# Tree of the Quarter

RAIN TREE  
*Albizia saman*

Submitted by the FUFCC  
Communication Committee

**Brief Intro:** Large, flowering evergreen tree, non-native to Florida. Open-grown trees can form short trunks and spreading limbs. Moderately invasive. The common name *Rain Tree* is derived from the behavioral characteristics of the leaves that fold in rainy weather. The specific epithet name, *saman* stems from a Caribbean word *zamang*, meaning “Mimosoideae tree.” Other common names include *silk tree* and *Mimosa*.

In its native habitat, the Rain Tree is a candidate for parks, pastures, and large home gardens and other multi-purpose sites. In Florida, there are many native, non-invasive alternatives and substitutes to choose from, but in specific landscape and land use objectives the tree may have a place. Spacing will depend on companion plants and management strategies. In urban areas, the moderately weak branch structure may require regular, systematic pruning/maintenance to protect adjacent infrastructure from falling large branches.

*Albizia saman* is a large counterpart to the familiar yet invasive *Mimosa (Albizia julibrissin)* tree which has escaped cultivation and Florida landscapes. *Albizia julibrissin* is not limited to USDA hardy zones 10-11 and is an invasive tree species

throughout Florida and Southeastern United States. *Albizia julibrissin* is a small to medium size, deciduous tree that can grow aggressively along roadsides, open pastures, vacant lots, disturbed areas, and flood plains.

**Habitat/Environment:** Native to Central America and northern South America. Widely introduced and naturalized to tropical areas around the world - especially southeast Asia, and Pacific islands. Winter hardy USDA Zones 10-11 (South Florida). Best in full sun and well-drained soils. Adaptive to variable soil types. Drought and heat tolerant. Relatively fast growing.

**Form:** Horizontal branching, symmetrical, wide-spreading, umbrella-shaped canopy. Grows 50-80ft tall and 50-100ft spread when mature. Moderately weak branch structure susceptible to breakage during high winds and storms.

**Leaves:** fern-like, bipinnate compound, dark, olive-green foliage. 12in long.

**Bark:** Gray-brown bark is rough and furrowed into ridges.



**Flowers:** Attractive, numerous, pink, silky, showy flowerheads. Prominent white & red stamens open in the spring. Best flowering when grown in full sun.

**Fruit:** Flat bean-like, 8-inch seed pods. Green pods turn brown as they mature. Tree is self-seeding producing numerous seedlings. Seed pods are edible and relished by livestock.

**Uses:** Attractive ornamental, shade tree. Flowers are appealing to pollinators. Strong carbon sequester. Wood is highly valued in the manufacturing of furniture, cabinets, and veneers.

#### Little Known Facts

- Seed pods are filled with sweet, edible, nutritious pulp.
- Commonly also known as the *five o'clock* tree because the leaves fold during the evening.
- The tree was used for the tree house stage prop for the 1960 production of *Swiss Family Robinson*.
- Chocolate colored heartwood makes an attractive contrast against the yellow sapwood.





# Wedgle® Direct-Inject™

## TREE INJECTION SYSTEM

Our advanced technology for tree treatment allows you to

**INCREASE THE  
NUMBER OF TREES  
YOU TREAT  
IN A DAY!**

- ◆ No drilling damage
- ◆ No mixing at job sites
- ◆ No guarding or return trips
- ◆ No waiting for uptake
- ◆ Treats most trees in five minutes or less!
- ◆ Successful and most profitable add-on service



Made in  
the USA

Multiple injection tips designed for all types of trees, conifers and palms



Insecticides • Fungicides • PGRs • Antibiotics • MicroNutrients

AVAILABLE AT:

# WINFIELD™

855-880-0048

[www.winfieldpro.com](http://www.winfieldpro.com)

## ArborSystems

Tree Injection Solutions  
[ArborSystems.com](http://ArborSystems.com)

# 2022 FRIENDS OF OUR URBAN FOREST AWARDS PROGRAM

Throughout Florida, urban forestry programs and initiatives are always underway. The Florida Urban Forestry Council's Friends of Our Urban Forest awards recognizes achievements, organizations, and individuals advocating and promoting community and urban forests. Are your people, places, and programs being recognized, announced, and celebrated? Does your community forest have outstanding people and programs? Have you ever applied for or submitted an award nomination to the Florida Urban Forestry Council? You can find out more about the Friends of Our Urban Forest Awards program at <https://fufc.org/awards-information/>.

## ELISE CASSIE OUTSTANDING PROFESSIONAL



**C**ongratulations! The Florida Urban Forestry Council is pleased to award Elise Cassie the 2022 Outstanding Professional award in recognition her personal and professional contributions to Project Learning Tree and environmental education - a core value for the Florida Urban Forestry Council (FUFC).

Elise Cassie is the Coordinator of Florida Project Learning Tree and an environmental education specialist for over 20 years. Elise earned a Bachelor's degree in Agricultural Education and a Masters in Extension Education, with a Graduate Certificate in Environmental Education and Communication. Elise's impressive history of professional experience exemplifies a high standard of talent, dedication, and passion required to coordinate all aspects of the statewide program; to advance the mission and vision of PLT; and the promotion, education, and overall enhancement of urban forestry in the state of Florida.

## SUSAN DAVIS & ANN BAKER OUTSTANDING TREE ADVOCATE



**T**he Florida Urban Forestry Council is pleased to award Susan Davis & Ann Baker the 2022 Outstanding Tree Advocate award in recognition of exceptional vision, leadership, and contributions to urban forestry activities and programs.

As early as 1975, the two advocates are celebrated as the founders of Greenscape of Jacksonville – Florida's longest-standing tree advocacy organization and perhaps the second oldest in the country according to the Arbor Day Foundation. Like flint & steel, the pair sparked an early call to action and the flames of advocacy for the planting, maintenance, protection, and promotion of trees; tree ordinances; and urban tree canopies. Their combined vision took root, established over 350,000 trees to the canopy of Northeast Florida, and continues to fuel the essential advocacy for today's and future urban forest programs and activities.

## HAMMOCKS IN THE HAMMOCKS – UNIVERSITY OF CENTRAL FL OUTSTANDING PROJECT

**"H**ammocks in the Hammocks" project demonstrated how innovative landscape designs can "support" students during their academic studies on the University of Central Florida (UCF) campus. The UCF "swung" into action with a tree-centric solution to meet the recreational interest and needs of students. Leisurely green spaces – of native palm hammocks - were specifically designed to promote and accommodate hammocks in order for students to enjoy the benefits of trees, canopies, and the great outdoors.



**URBAN ORCHARDS –  
COMMUNITY GREENING  
OUTSTANDING URBAN FORESTRY PROGRAM**



**T**he Florida Urban Forestry Council is pleased to award “Urban Orchards” – a Community Greening program - the 2022 Outstanding Urban Forestry Program award in recognition of an innovative and inspiring community and urban forestry program. Urban orchards are transforming neglected lots into vibrant, productive green spaces and community projects through the collaboration of local municipalities, nonprofits, corporate sponsorship, and neighborhood participation. Community Greening manages vendors, tree selection and acquisition, site preparation, utilities marking, promotion and marketing. The Urban Orchards program is cultivating fruitful communities as the orchards grow.



Submit your entries for the 2023 awards in the following categories:

- Outstanding Professional
- Outstanding Tree Advocate or Tree Advocacy Group
- Outstanding Project
- Outstanding Urban Forestry Program
- Outstanding Tree Ordinance
- Outstanding Utility
- Lifetime Achievement Award

**ERIN GIVENS  
LIFETIME ACHIEVEMENT AWARD**



**T**he Florida Urban Forestry Council is pleased to award Erin Givens the 2022 Lifetime Achievement award in recognition for her outstanding contribution to the Florida Urban Forestry Council in 2022, and her distinguished dedication and service to the advancement of Urban Forestry.

Erin pushed forward and led the FUFU well beyond the call of duty during the daunting tasks, innumerable unknowns, mounting hurdles, and challenging months following the passing of Sandy Temple - long-time Executive Director of the FUFU. This in and of itself, was a notable achievement of a lifetime.

Erin Givens is not only recognized for the invaluable service to the FUFU during perhaps its most difficult

challenge, but also for career-long distinguished service and dedication to the advancement of urban forestry as demonstrated through a Bachelor of Science degree in Forestry & Wildlife from the University of Florida; ISA Certified Arborist; ISA TRAQ qualification; Society of American Foresters membership; long-standing FUFU member; and over 17 years of experience with various realms of urban forestry - to include, but not limited to, private consulting, municipal, and utility Arboriculture.

Award recognition and thank you is hardly enough to express the heartfelt gratitude the FUFU, and Florida’s Forestry Community has for Erin’s distinguished service and dedication to the advancement of urban forestry.



## OUR TEAM

JOHN HOLZAEFFEL, CA, TRAQ

(352)238-0917

ERIC HOYER, CA, RCA, TRAQ, WRRQ

(863)670-0734

CHARLIE MARCUS, CA, TRAQ

(850)570-5963

STAN ROSENTHAL, TRAQ

(850)508-6771

JAY VOGEL, CA, WRRQ

(352)238-0458

## LEGACY ARBORIST SERVICES

A DIVISION OF NRPS FOCUSED ON PROVIDING INNOVATIVE SOLUTIONS  
FOR MANAGING THE URBAN FOREST

Tree Inventories and Management Plans

Tree Protection Strategies

Tree Appraisals and Risk Assessment

Tree Ordinance Analysis

Tree Health Care Treatments Expert

Witness Testimony Educational

Workshops

i-Tree/Environmental Analysis

Community Wildfire Plans/Mitigation



CREATING A LEGACY, GROWING YOUR FUTURE SINCE 1974

[www.NRPSforesters.com](http://www.NRPSforesters.com)

# PROJECT LEARNING TREE

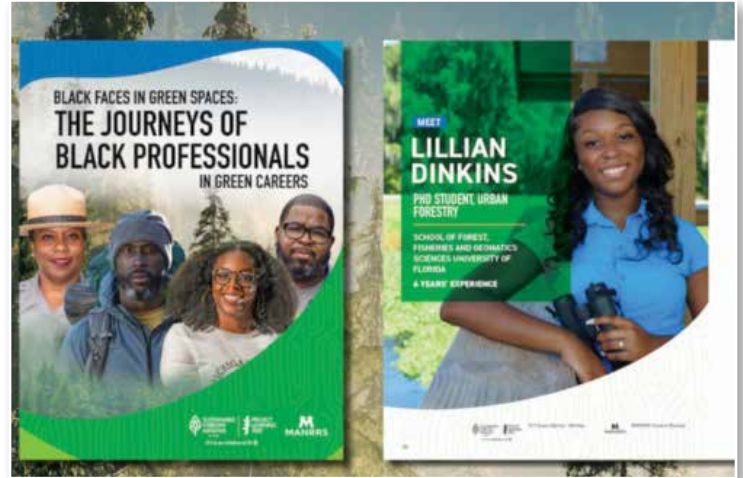
JUST RELEASED!

## NEW PUBLICATION HELPS INTRODUCE YOUNG BLACK AMERICANS TO GREEN JOBS OPPORTUNITIES

The SFI-PLT- Minorities in Agriculture, Natural Resources, and Related Sciences (MANRRS) *Black Faces in Green Spaces: The Journeys of Black Professionals in Green Careers* guide showcases a diversity of experiences and careers, emphasizing there is a place for everyone to find a career in the forest and conservation sector.

Many Black young adults are unaware of green job opportunities. As we continue to expand our understanding of the importance of urban forests, there will be growing career opportunities in this space. Urban forests and trees and their associated benefits, including urban forestry/ecology jobs can be accessible and available to all.

Please consider buying or donating a box that can be given to schools, colleges, and universities, such as Title I schools and



Historically Black Colleges and Universities (HBCUs). If you are an employer, this is a wonderful companion piece to hand out at recruitment event. Learn more at <https://www.plt.org/journeys>.



## CELEBRATION OF LIFE

Celebrating the life of Sandy Temple – Former Executive Director of the FUFC, with her children Ashley Gauthier and Andrew Temple at Harry P. Leu Gardens, Orlando, FL. Also pictured are Sandy’s Grandchildren Ben and William Gauthier. The family stands beside a Southern magnolia memorial tree planted in honor of Sandy. Thank you, Marshall Tree Farm, for donating this beautiful tree.

celebration  
of  
*life*

Sandra Crosby Temple

Saturday, January 14, 2023  
11am-2pm  
Leu Gardens, Orlando, FL



# Join Us

Our members are the lifelines of our mission.  
Thank you for your continued support.

*New and renewed members through March 31, 2023. Please let us know if we fail to mention your name.*

## SUPPORTING

*Carolyn Cheatham Rhodes*

## A FRIEND OF THE FLORIDA URBAN FORESTRY COUNCIL

*Jeff Foltz  
John Foltz  
Lilian Sattler  
Andrew Wiltz  
Jennifer Wiltz*

## EARTH ADVISORS, INC.

*Carol Bailey  
Darlene Harris  
Brandy Kuehne  
James Plowman*

## NRPS LEGACY ARBORIST SERVICES

*John Holzaepfel  
Charlie Marcus*

## ORLANDO UTILITIES COMPANY

*Dustin Goodson  
Rich McCoy  
Rick Taylor*

## GOVERNMENT

### CITY OF CAPE CORAL

*Amanda Claxton  
Omar Leon*

### CITY OF NORTH PORT

*Alice White*

### CITY OF TAMPA

*Luis Alcantara, Jr.  
Sherri Mullis  
Kathleen Carter  
Toby Loveall  
Nelson Martinez-Cortes*

### CITY OF TARPON SPRINGS

*Shannon Brewer*

## CITY OF WINTER HAVEN

*Michael Carneval  
Michael Campbell  
Dustin Everitt  
Mary Thornhill  
Savannah Winstanley*

## COMMUNITY GREENING

*Mark Cassini  
Victoria Centamore  
Ford Derastel  
Michele Lewandowski  
Kenny Williams*

## FLORIDA PROJECT LEARNING TREE

*Elise Cassie*

## JEA

*Joe Anderson  
Landall Demby  
Sam Dunbar  
Michael Ninos  
Greg Preston  
Scott Souter*

## NAPLES BOTANICAL GARDEN

*Nick Ewyr  
Brian Galligan  
Britt Patterson-Weber  
Isabel Soto  
Chad Washburn*

## OSCEOLA COUNTY

*Terry Kincaid*

## T.R.E.E. INC.

*Ashlé Baines  
John Fuller  
Harvey Hunt  
William Moriarty  
Michael Riebe*

## PROFESSIONAL

*Lauren Adams  
Laura Adams  
Ahmed Ali  
Ander Alvarez  
Alexis Alvey  
Jennifer Angeline  
Kathy Beck  
Gerald Behan  
Joshua Bott  
Tara Boujoulian  
Edgar Brown  
Caitlyn Cherro  
Christine Claus  
Beverly Cline  
April Cottini  
Mark Covington  
David Crawley  
Brynn Dauphinais  
Emilyvette DeGaetano  
Pat Deplasco  
Brian Dick  
Greg Dunn  
Steve Edgar  
Steven Eyster  
Daniel Fendley  
Joesepp Ferris  
David Fox  
Janice Rector  
Justin Gearhart  
John Giedraitis  
Emily Gonzalez  
Kevin Greene  
Lisa Grubba  
John Guziejka  
Katie Habgood  
Laurie Hall  
Laura Halsey  
Ruth Hamberg  
Alexandria Hancock  
Dean Hay  
Julia Herbst  
Nathan Holzaepfel  
Ray jarrett  
Kate Johnston  
Matthew Kennard*

*Michele Laskowski  
Melba Leiman  
Janine Lester  
Chase Lunn  
Joseph MacKenzie  
Jason Maldonado  
Andrew Malmquist  
Gregory Marshall  
Rich McCoy  
Drew McLean  
Cory Meyer  
Eric Muecke  
Mona Neville  
Suzanne Newman  
Laura Nunez  
Michael Orfanedes  
Paula Osborne-  
Vasquez  
Jennifer Pelham  
Cristofer Revell  
Charles Rice  
Grantly Ricketts  
Joe Riley  
Jorge Rivera  
John Roberts  
Jennifer Rogers  
John Rohan  
Buck Rollings  
Andrew Simmons  
Travis Simmons  
Ronnie Simpson  
Dawn Sinka  
Daniel Sorrow  
Don Spence  
Bonnie Stine  
Christina Stocking  
Angela Straun  
Dana Sussmann  
Chrystine Tauber  
Alyssa Vinson  
Brian Voelker  
Mark Williams  
Greg Wright  
Dianne Yekel*

## TREE ADVOCATE

*Tracey Arpen  
Kelly Baumier  
Susan Carter  
Julie Iooss  
Jerry Renick  
Shawn Smith  
Derric Tay  
Tammy Vrana  
David Wing*

## STUDENT

*Selina Carroll  
Jamielyn Daugherty  
Lillian Dinkins  
Erin Givens  
Anand Kumar  
Paul Luzuriaga  
Melissa Major  
Larsen McBride  
Elise Willis  
Dana Willson*

## HONORARY

*Mike Conner  
Anna Dooley  
Norm Easey  
Justin Freedman  
Ed Gilman  
Steve Graham  
Michael Greenstein  
Elizabeth Harkey  
John Harris  
Mary Lou Hildreth  
John Holzaepfel  
Julie Iooss  
Howard Jeffries  
Andy Kittsley  
Ken Lacasse  
Earline Luhrman  
Bill Reese  
Jerry Renick  
Mike Robinson  
Linda Seufert  
John Tamsberg  
Celeste White*



**FUFC PAST PRESIDENTS**

- Erin Givens* ..... (2022)
- Joe Anderson*..... (2020-2021)
- John Harris* ..... (2018-2019)
- Linda Seufert*..... (2016-2017)
- Justin Freedman*..... (2015)
- Ken Lacasse* ..... (2014)
- Elizabeth Harkey*..... (2013)
- Mary Lou Hildreth* ..... (2012)
- Jerry Renick* ..... (2011)
- John Holzaepfel*..... (2010)
- Earline Luhrman*..... (2008-2009)
- Celeste White*..... (2006-2007)
- Mike Robinson* ..... (2004-2005)
- Mike Greenstein* ..... (2002-2003)
- Howard Jeffries*..... (2001)
- Anna Dooley*..... (2000)
- Julie Iooss*..... (1999)
- Mike Conner*..... (1998)
- John Tamsberg* ..... (1996-1997)
- Norm Easey*..... (1995)
- Jeffrey Siegel*..... (1994)
- Andy Kittsley* ..... (1993)
- Bill Reese* ..... (1992)
- Ed Gilman*..... (1991)
- Steve Graham*..... (1990)

## REQUEST FOR ARTICLES

Please let us know what urban forestry projects you have going on in your neck of the woods. The Florida Urban Forestry Council would greatly appreciate the opportunity to share your information in our newsletter. These articles can include:

- New trends in the industry
- News about tree advocacy groups
- Volunteer projects
- City tree programs
- Letters to the Editor
- Questions for “Stump the Forester”

We look forward to hearing from you on this or any other interesting topic related to the urban forestry industry and profession. Please send any articles or ideas to Joe Anderson, FUFC newsletter editor, at [andejs@jea.com](mailto:andejs@jea.com).

*Thanks for contributing!*



## MEMBERSHIP APPLICATION

*(Dues are effective for the calendar year of January 1 - December 31)*

**Make check or money order payable to FUFC and mail to:**

Post Office Box 547993, Orlando, FL 32854-7993

Categories (please check one):

- Professional @ \$25.00**  
*(Professional membership is open to anyone who is actively working in the profession of Urban Forestry or any related profession.)*
- Tree Advocate @ \$20.00**  
*(Tree Advocate membership is granted to those volunteers who are members of a tree board, beautification committee or other Urban Forestry volunteer group, and/or an interested citizen.)*
- Supporting @ \$200.00**  
*(Supporting membership is granted to those individuals, groups or other entities expressing a desire for a strong supportive role in the Council. Membership will be granted for up to five individuals of an organization or business.)*
- Government/Non-Profit Agency @ \$100.00**  
*(Government/Non-Profit Agency membership is granted to those individuals, groups or other entities actively working in the profession of Urban Forestry or any related profession. Membership will be granted for up to five individuals within the agency.)*
- Student @ \$10.00**  
*(Student membership is granted to anyone who is actively enrolled as a full-time student and who is considering pursuing a career in Urban Forestry.)*

Name: \_\_\_\_\_

Title: \_\_\_\_\_

Firm: \_\_\_\_\_

Address: \_\_\_\_\_

City: \_\_\_\_\_

State: \_\_\_\_\_ Zip: \_\_\_\_\_

Telephone: (\_\_\_\_) \_\_\_\_\_

FAX: (\_\_\_\_) \_\_\_\_\_

E-mail: \_\_\_\_\_

Amount Enclosed: \_\_\_\_\_ Date: \_\_\_\_/\_\_\_\_/\_\_\_\_

Would you be interested in further information regarding serving on a Council subcommittee?  Yes  No  
Area of interest: \_\_\_\_\_

Clip and Mail Today!



# Friend of the Florida Urban Forestry Council

John Foltz  
Sustaining Sponsor

## Working in Harmony with Nature

Sumter Electric Cooperative has always placed a high priority on the environment by working to stay in harmony with nature. Evidence of SECO's environmental stewardship is displayed through the following programs.

### Sumter Electric Cooperative:

- was named a *Tree Line USA* utility for the fourth consecutive year by *The National Arbor Day Foundation*. Employee arboriculture training, public education, and maintaining abundant, healthy trees in SECO's service area are common practices.
- installs osprey nesting dishes atop of the utility pole cross arms as needed for these magnificent birds.
- places squirrel guards atop the transformers to protect a variety of animals from danger, particularly squirrels.
- offers net metering to members interested in renewable generation such as photovoltaic systems.
- recycles retired power equipment, scrap steel, aluminum, copper, porcelain, fluorescent lights, ink printer and copier cartridges, plus much more.
- researches and writes *Nature's Reflections*, a special column in the members' newsletter developed to educate the community on the flora and fauna of Florida with eco-friendly topics like xeriscaping and conservation.



## COUNCIL'S DISPLAY BOOTH

Whether it is an outdoor environmental event or conference trade show, The Florida Urban Forestry Council's display booth will help provide information about the Council and Urban Forestry educational resources for citizens and communities. To request the booth at your event email [info@fufc.org](mailto:info@fufc.org).



# Help Us Grow!



BECOME A MEMBER,  
FOLLOW & SHARE OUR SOCIAL MEDIA PROFILES

/floridaurbanforestrycouncil

/floridaurbanforestry

/fufc\_org

/company/florida-urban-forestry-council/





FLORIDA URBAN FORESTRY COUNCIL  
200 2nd Ave. South #130  
St. Petersburg, FL 33701-4313

For more information, please contact the Florida Urban Forestry Council:

E-Mail: [info@fufc.org](mailto:info@fufc.org)  
Website: [www.fufc.org](http://www.fufc.org)  
Phone: (727) 475-5900  
Fax: (727) 565-2981

Place Your Ad Here  
Affordable Rates

(see page 2 for details)

## 2023 FUFc EXECUTIVE COMMITTEE MEMBERS

### OFFICERS:



**Carolyn Cheatham Rhodes**  
*President*  
Appointed Position  
Executive Officer/  
Advisory



**Darryl Richard**  
*President Elect*  
Executive Officer/  
Advisory  
FDOT - District One



**John Snow**  
*Vice President*  
Executive Officer/  
Advisory  
Appointed Position  
Tree Check Up, LLC



**John Rohan**  
*Secretary*  
Elected Position/Member-  
At-Large  
Davey Resource Group



**David Fox**  
*Treasurer*  
Executive Officer/  
Member-at-Large  
University of Florida -  
SFFGS



**Erin Givens**  
*Immediate Past President*  
Executive Officer/  
Advisory  
Orlando Utilities  
Commission

### COMMITTEE MEMBERS:

**Jen Ahearn-Koch**, *Appointed Position*  
Advisory  
Florida League of Cities  
Tallahassee

**Joe Anderson**, *Elected Position*  
Utility Forester  
Jacksonville

**Elise Cassie**, *Elected Position*  
Member-at-Large  
FL Project Learning Tree  
Gainesville

**Brian Dick**, *Appointed Position*  
ASLA/FL Chapter  
City of Lakeland

**Lilian Dinkins**, *Appointed Position*  
Advisory  
Gainesville

**Steve Edgar**, *Appointed Position*  
FL SAF  
Port Orange

**Justin Freedman**, *Appointed Position*  
FL Chapter ISA  
Resource Environmental Solutions  
Miami Beach

**Alex Hancock**, *Appointed Position*  
Advisory Member  
PlanIt Geo  
St. Petersburg

**John Harris**, *Appointed Position*  
FNGLA  
Earth Advisors, Inc.  
South Florida

**Dean Hay**, *Appointed Position*  
Advisory  
St. Petersburg

**Omar Leon**, *Elected Position*  
Member-At-Large  
City of Cape Coral Arborist

**William "Bill" Lester**, *Appointed Position*  
Cooperative Extension Service  
Hernando County Extension Office

**Will Moriarty**, *Elected Position*  
Tree Advocate  
T.R.E.E. Inc. Tampa Bay

**Mark Williams**, *Elected Position*  
City Arborist  
City of Fort Lauderdale

**Greg Wright**, *Appointed Position*  
FRPA  
City of Largo

**Brian Voelker**, *Elected Position*  
Private Arborist  
Chen Moore & Associates  
Miami - Fort Lauderdale

**Todd Little**  
Liaison – Florida Forest Service

**Matt Kennard**  
Liaison – Florida Forest Service

**Dr. Deborah Hilbert**  
*FUFc Executive Director*

**Graphic Design**  
*Sinclair Design Studio*